

SIoux COUNTY RESOLUTION NO.: 2018-18

CITY OF HOSPERS, IOWA RESOLUTION NO.: 2018-05

WHEREAS: The Board of Supervisors of Sioux County, Iowa are empowered under authority of Section 321.255 and 321.285 of the Code of Iowa to determine that the Speed Limit on any secondary road is greater than is reasonable and proper under the conditions existing, and may determine and declare a reasonable and proper speed limit, and

WHEREAS: The Board of Supervisors of Sioux County, Iowa and the City of Hospers, Iowa acknowledge that a reasonable and proper Speed Limit be established for the safety of the traveling public and residence along a portion of Log Avenue (County Road South) including the portion of Log Avenue (County Road South) along the east corporate limits of Hospers, Iowa due to the excessive speed from truck traffic and vehicles exiting and entering Hospers, Iowa from Hwy 60 on Log Avenue (County Road South)

NOW THEREFORE BE IT RESOLVED by the Sioux County Board of Supervisors and the City Council of Hospers, Iowa that a 35 M.P.H. Speed Limit be established and appropriate signs be furnished by the City of Hospers, Iowa and erected and maintained by Sioux County, Iowa at the following location:

- 1) Beginning at the intersection of Log Avenue (County Road South) and 400th Street (B40) then south 1,280 feet on Log Avenue (County Road South) at Hospers, Iowa.

Passed and Approved this 15th day of May, 2018

ATTEST:



Ryan Dokter
Sioux County Auditor



Mark Sybesma, Chairperson,
Sioux County Board of Supervisors

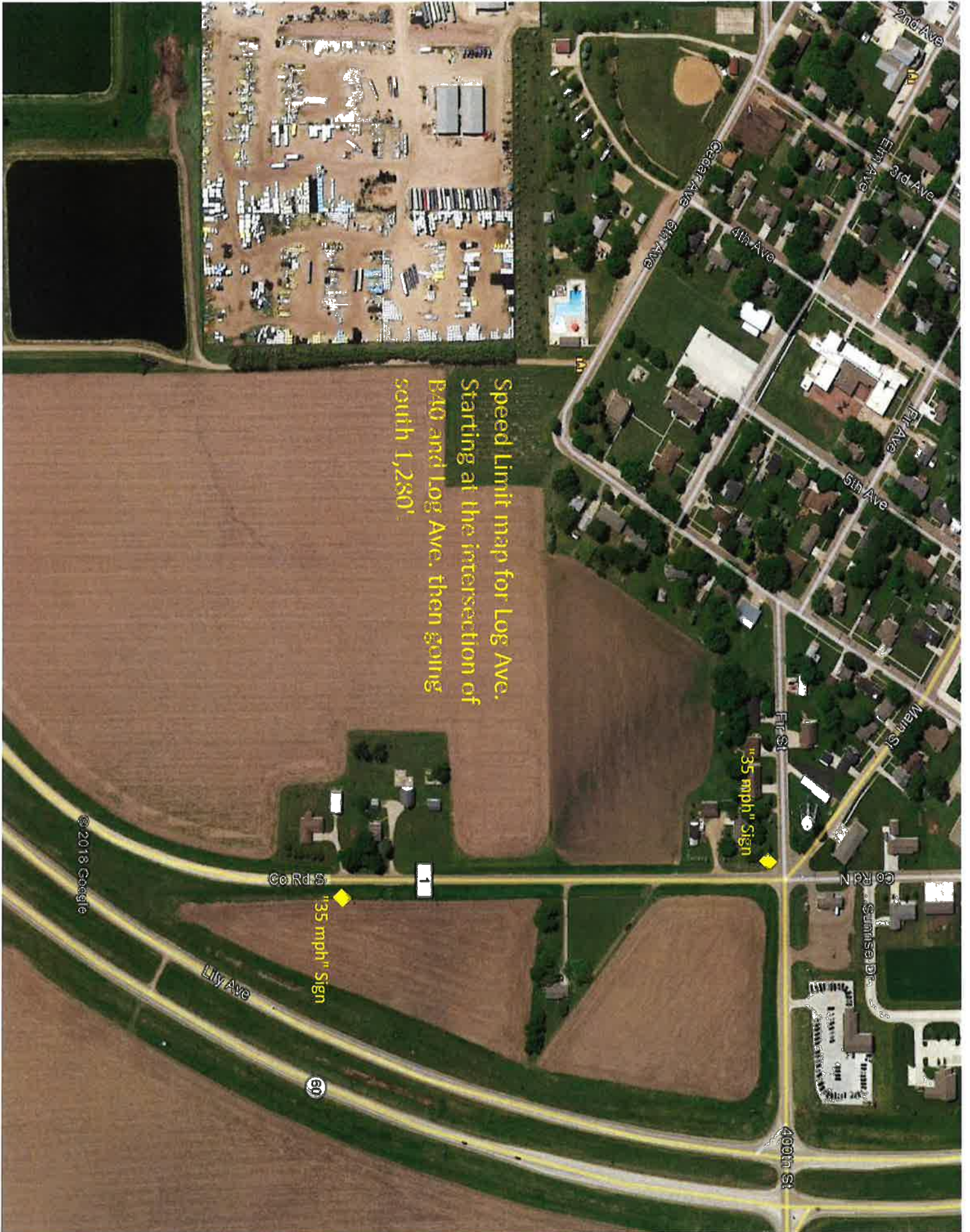
ATTEST:



Heidi Kramer
City Clerk
City of Hospers, Iowa



Dan Dykstra
Mayor
City of Hospers, Iowa,



Speed Limit map for Log Ave.
Starting at the intersection of
B40 and Log Ave. then going
south 1,280'

© 2018 Google