

SIoux COUNTY RESOLUTION NO.: 2011-24

CITY OF SIoux CENTER RESOLUTION NO.: SC-R-22-11

WHEREAS: The Board of Supervisors is empowered under authority of Sections 321.255 and 321.285 of the Code of Iowa to determine that the Speed Limit on any secondary road/extension is greater than is reasonable and proper under the conditions existing, and may determine and declare a reasonable and proper speed limit, and

WHEREAS: Sioux County, Iowa and the City of Sioux Center, Iowa have concurrent jurisdiction over the extension of 400<sup>th</sup> Street (B40)/9<sup>th</sup> Street SE within the Corporate Limits of Sioux Center, Iowa along the south side of Section 4, T95N, R45W (West Branch Twp), and

WHEREAS: The City of Sioux Center, Iowa has requested that a reasonable and proper Speed Limit be established for the safety of pedestrians, children, and the traveling public near and around the Kinsey Elementary School and residential areas

NOW THEREFORE BE IT RESOLVED by the Sioux County Board of Supervisors and the City of Sioux Center, Iowa that a reduced Speed Limit be established and the appropriate signs including School Zone Signs placed at School property lines be furnished and maintained by the City of Sioux Center, Iowa and be erected by Sioux County, Iowa at the following locations.

- 1) On 400<sup>th</sup> Street (B40)/9<sup>th</sup> Street S.E. within the Corporate Limits of Sioux Center, Iowa from the intersection of 400<sup>th</sup> Street (B40)/9<sup>th</sup> Street S.E. and 4<sup>th</sup> Avenue S.E. east approximately 1,110 feet, 25 M.P.H. from that point east approximately 1,140 feet, 40 M.P.H. from that point east 55 M.P.H.

Passed and Approved this 8th day of August, 2011

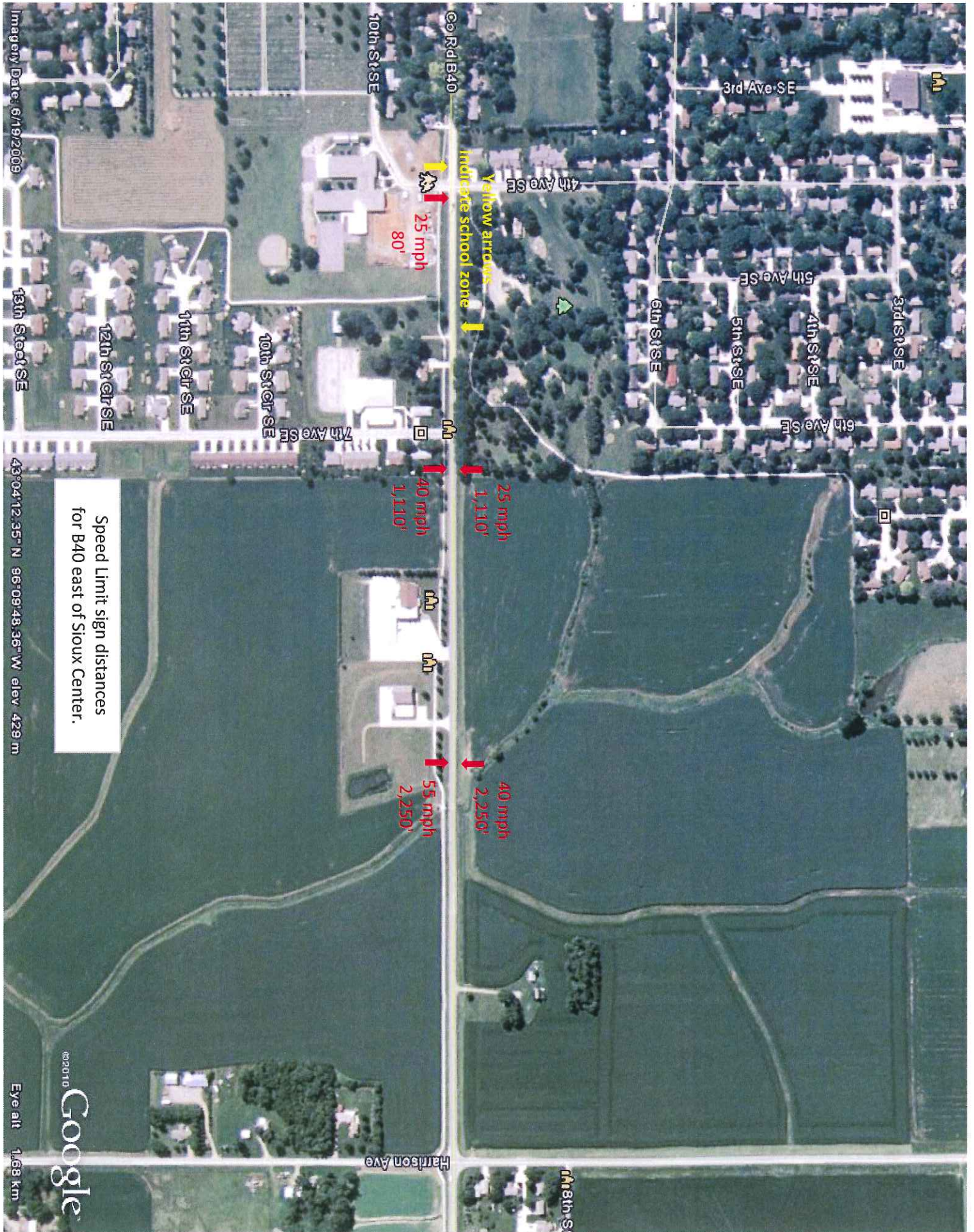
ATTEST: Lois Huitink  
Lois Huitink  
Sioux County Auditor

Mark Sybesma  
Mark Sybesma, Chairperson,  
Sioux County Board of Supervisors

ATTEST: Paul Clousing  
Paul Clousing, Clerk  
City of Sioux Center, Iowa

Dennis Walstra  
Dennis Walstra, Mayor  
City of Sioux Center, Iowa





3rd Ave SE

4th Ave SE

5th Ave SE

4th St SE

6th St SE

5th St SE

6th Ave SE

10th St SE

11th St SE

12th St SE

13th St SE

7th Ave SE

40 mph  
1,110'

25 mph  
1,110'

55 mph  
2,250'

40 mph  
2,250'

Rd B40

Yellow arrows  
indicate school zone

25 mph  
80'

Speed Limit sign distances  
for B40 east of Sioux Center.

Imagery Date: 6/19/2009

43°04'12.35" N 98°09'48.36" W elev. 429 m

Google  
Eye alt 1,668 km

Harrison Ave

14th St